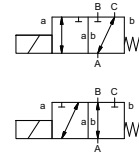


coaxial valve

type FK 80 DR



3/2 way valve **direct acting**
pressure range PN 0-16 bar
orifice DN 80 mm
connection flange
function valve normally closed (A ► B)
 symbol **NC**
 valve normally open (A ► B)
 symbol **NO**



Above stated body materials refer to the valve port connections that get in contact with the media only!

design pressure balanced, with spring return, switching overlap
body materials ① aluminium ② steel, galvanized
 ③ ⑤
 ④ steel, nickel plated ⑥ stainless steel
valve seat synthetic resin on metal
seal materials NBR PTFE, FPM, EPDM

details needed

- orifice
- port
- function NC/NO
- operating pressure
- inlet pressure at A, B or C
- flow rate
- media
- media temperature
- ambient temperature
- nominal voltage

| | general specifications | options |
|-----------------------------|---------------------------------------------------------------|-------------------------------------------|
| ports | FK flanges PN 16 | special flanges |
| function | NC | NO |
| pressure range | bar 0-16 | |
| | A ⇒ B max. 16 / B ⇒ A max. 5 / A ⇒ C max. 16 / C ⇒ A max. 16 | |
| Kv value | m ³ /h 55,0 | |
| vacuum | leak rate | < 10 ⁻⁴ mbar·l·s ⁻¹ |
| pressure-vacuum | P ₁ ⇔ P ₂ | upon request |
| back pressure | P ₂ > P ₁ see pressure range | |
| media | gaseous - liquid - highly viscous - gelatinous - contaminated | |
| abrasive media | | upon request |
| damping | opening | |
| | closing | |
| flow direction | see pressure range | |
| switching cycles | 1/min 20 | |
| switching time | ms opening 600 closing 800 | |
| media temperature | °C DC: -20 to +80 | |
| | AC: -20 to +80 | |
| ambient temperature | °C DC: -20 to +80 | |
| | AC: -20 to +80 | |
| limit switches | | inductive |
| manual override | | |
| approvals | | LR/GL/WAZ |
| mounting | | |
| weight | kg FK 48,8 | |
| additional equipment | | upon request |

| | electrical specifications | options |
|--------------------------------------|-----------------------------------------------------------------------------|--------------------------------|
| nominal voltage | U _n DC 24 V | special voltage upon request |
| | U _n AC 230 V 40-60 Hz | special voltage upon request |
| actuation | DC direct-current magnet | |
| | AC direct-current magnet with integrated rectifier | |
| insulating rating | H 180°C | |
| protection | IP65 | |
| energized duty rating | ED 100% | |
| connection | plug acc. DIN EN 175301-803 form A, 4 positions x90° / wire diameter 6-8 mm | terminal box M16x1,5 |
| optional additional equipment | | illuminated plug with varistor |
| current consumption | N-coil DC 24 V 4,40 A | |
| | AC 230 V 40-60 Hz 0,65 A | |
| | H-coil | AC 230 V 40-60 Hz 0,79 A |
| explosion proof | | |
| limit switches | inductive (I) | normally open-PNP |
| | inductive (B) | normally open-PNP |

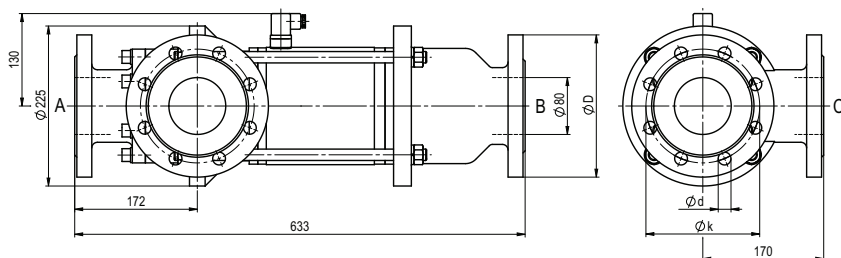
The valves' technical design is based on media and application requirements. This can lead to deviations from the general specifications shown on the data sheet with regards to the design, sealing materials and characteristics.

If order or application specifications are incomplete or imprecise there exists a risk of an incorrect technical design of the valve for the required application. As a consequence, the physical and / or chemical properties of the materials or seals used, may not be suitable for the intended application.

■ specifications not highlighted are standard
 ■ specifications highlighted in grey are optional

type **FK 80 DR**

function: **NC**
 closed when not energized (A ► B)



| flanges PN | DIN | $\varnothing D$ | $\varnothing k$ | $\varnothing d$ |
|------------|-----------|-----------------|-----------------|-----------------|
| 16 | EN 1092-1 | 200 | 160 | 18 |

type **FK 80 DR**

function: **NO**
 open when not energized (A ► B)

