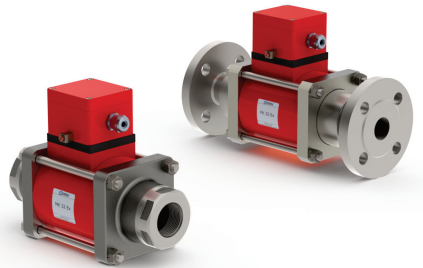
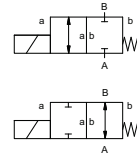


coaxial valve

type MK 32 Ex FK 32 Ex



2/2 way valve **direct acting**
pressure range PN 0-64 bar
orifice DN 32 mm
connection thread/flange
function valve normally closed symbol **NC**
 valve normally open symbol **NO**



▲ Above stated body materials refer to the valve port connections that get in contact with the media only!

design pressure balanced, with spring return
body materials ① brass ② steel, galvanized
 ③ brass, nickel plated ⑤ without non-ferr. metals
 ④ steel, nickel plated ⑥ stainless steel
valve seat synthetic resin on metal
seal materials NBR PTFE, FPM, CR, EPDM

details needed

- orifice
- port
- function NC/NO
- operating pressure
- flow rate
- media
- media temperature
- ambient temperature
- nominal voltage

| general specifications | | options |
|-----------------------------|--|------------------------------------|
| ports | MK threads G 1 1/4 - G 1 1/2 FK flanges PN 16 / 40 / 100 | special threads special flanges |
| function | NC | NO |
| pressure range | bar 0-16 / 0-40 / 0-64 | |
| Kv value | m ³ /h 14,1 | |
| vacuum | leak rate < 10 ⁻⁶ mbar·l·s ⁻¹ | |
| pressure-vacuum | P ₁ ↔ P ₂ upon request | |
| back pressure | P ₂ > P ₁ available (max. 16 bar) | |
| media | gaseous - liquid - highly viscous - gelatinous - contaminated | |
| abrasive media | | upon request |
| damping | opening closing | available |
| flow direction | A ↔ B as marked | bi-directional (max. 16 bar) |
| switching cycles | 1/min 120 | |
| switching time | ms opening 440 closing 250 | |
| media temperature | °C DC: -20 to +40 AC: -20 to +40 | |
| ambient temperature | °C DC: -20 to +40 AC: -20 to +40 | |
| limit switches | | inductive |
| manual override | | available |
| approvals | | LR/GL/WAZ |
| mounting | | mounting brackets |
| weight | kg MK 13,5 FK 17,5 | |
| additional equipment | | upon request |

⚠ The valves' technical design is based on media and application requirements. This can lead to deviations from the general specifications shown on the data sheet with regards to the design, sealing materials and characteristics.

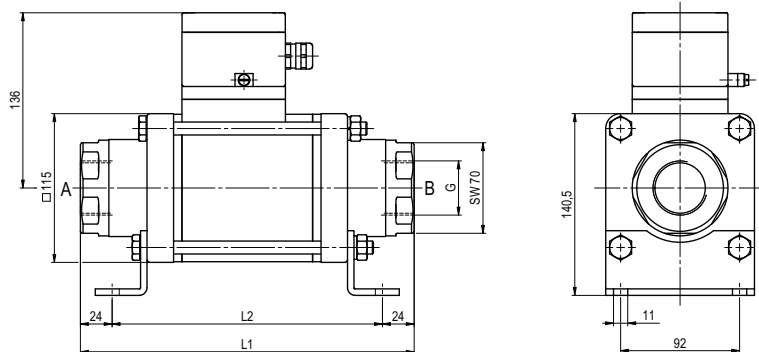
⚠ If order or application specifications are incomplete or imprecise there exists a risk of an incorrect technical design of the valve for the required application. As a consequence, the physical and / or chemical properties of the materials or seals used, may not be suitable for the intended application.

| electrical specifications | | options |
|--------------------------------------|--|--|
| nominal voltage | U _n DC 24 V U _n AC 230 V 40-60 Hz | special voltage special voltage |
| actuation | DC direct-current magnet AC direct-current magnet with separate rectifier outside of the explosion-proof area | sand sealed rectifier |
| insulating rating | H 180°C | |
| protection | IP65 | |
| energized duty rating | ED 100% | |
| connection | M16x1,5 terminal box | |
| optional additional equipment | | |
| current consumption | U _n V-DC 24 200 I _n A 2,05 0,29 | 20 48 98 110 210 220 230 2,72 1,07 0,54 0,48 0,25 0,25 0,21 |
| explosion proof | II 2 G EEx em II T4 und II 2 D IP 65 T 130 °C PTB 03 ATEX 2051 X | |
| limit switches | inductive NAMUR | circuit amplifier |

■ specifications not highlighted are standard
 ■ specifications highlighted in grey are optional

type MK 32 Ex

function: **NC**
closed when not energized



| constructive length | L1 | L2 | L3 |
|---|-----|-----|-----|
| standard | 258 | 210 | 324 |
| with 1/2 inductive limit switches | 299 | 251 | 365 |
| with manual emergency (Hd)/ Hd and 1/2 ind. limit switches | 299 | 251 | 365 |

| flanges PN | DIN | ØD | Øk | Ød |
|------------|-----------|-----|-----|----|
| 16 | EN 1092-1 | 140 | 100 | 18 |
| 40 | EN 1092-1 | 140 | 100 | 18 |
| 100 | EN 1092-1 | 155 | 110 | 22 |

type FK 32 Ex

function: **NO**
open when not energized

