

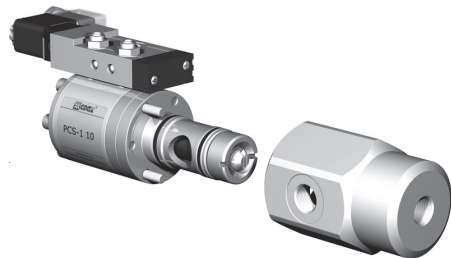
5-PCS-1 10

5-PCS-2 10

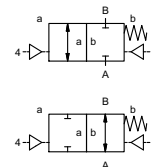
valve type with pilot valve

lateral valve

type PCS-1 10 PCS-2 10



2/2 way valve externally controlled
pressure range PN 0-200 bar
orifice DN 10 mm
connection thread/cartridge
function valve normally closed symbol **NC**
 valve normally open symbol **NO**



⚠ Above stated body materials refer to the valve port connections that get in contact with the media only!

design externally controlled, with spring return
body materials ① aluminium ③
 ① ④
 ② ⑥ stainless steel
valve seat synthetic resin on metal metal on metal
seal materials HNBR FPM, EPDM

details needed for main valve

- orifice
- port
- function NC/NO
- operating pressure/Δp
- flow rate
- media
- media temperature
- ambient temperature
- type of actuation

details needed for pneumatic actuation

- nominal voltage
- type of protection
- actuation pressure range min/max
- low wattage coil, actuation pressure range 4-7 bar
- pilot valve type

details needed for hydraulic actuation

- actuation pressure range min/max
- hydraulic control valve function

⚠ The valves' technical design is based on media and application requirements. This can lead to deviations from the general specifications shown on the data sheet with regards to the design, sealing materials and characteristics.

⚠ If order or application specifications are incomplete or imprecise there exists a risk of an incorrect technical design of the valve for the required application. As a consequence, the physical and / or chemical properties of the materials or seals used, may not be suitable for the intended application.

■ specifications not highlighted are standard
 ■ specifications highlighted in grey are optional

general specifications

ports	PCS-1 without valve body	with valve body thread G 3/8
	PCS-2 without valve body	with valve body thread G 3/8
function	NC	NO
pressure range	bar	0-200 (see pressure diagram)
Kv value	m³/h	3,0
vacuum	leak rate	
pressure-vacuum	P1 ⇄ P2	
back pressure	P2 > P1	available upon request
media		gaseous - liquid - highly viscous - gelatinous - pasty - contaminated
abrasive media		version available
damping	opening	
	closing	by throttles on pilot valve
flow direction	A ⇄ B	as marked
switching cycles	1/min	700
switching time	ms	opening 30-3000 closing 30-3000
media temperature	°C	direct mounted pilot valve 60
ambient temperature	°C	direct mounted pilot valve 50
flush ports		
leak ports		available
limit switches		inductive
manual override		via 5/2-way pilot valve
approvals		WAZ
mounting		mounting holes on valve body 2 x M6
weight	kg	PCS-1 1,1 PCS-2 1,2
additional equipment		PCS-1 1,7 PCS-2 1,8 valve body

options

electrical specifications

nominal voltage	U _n	DC 24V	special voltage upon request
	U _n	AC 230V 50 Hz	special voltage upon request
power consumption	DC	4,8 W	2,5 W
	AC	pick up 11,0 VA holding 8,5 VA	
protection	IP 65 (P54)	acc. DIN 40 050	
energized duty rating	ED	100%	
connection		plug acc. DIN EN 175301-803 form B, 4 positions x 90° / wire diameter 6-8 mm	
additional equipment		illuminated plug with varistor	
optional		connector acc. DESINA	
max. temperature	M12x1	connector acc. VDMA	
	media	60°C	
	ambient	50°C	
explosion proof	EEx m II T5	nominal voltage U _n	direct current 24 V 3,25 W
		power consumption	alternating current 230 V 50 Hz 2,90 W

options

pneumatic specifications

actuation pressure range	bar	4-10
air consumption	cm³/stroke	PCS-1 7 PCS-2 17
cycle speed	main valve speed variable by throttles on pilot valve	
control	by 5/2-way pilot valve	
actuator ports	2/4	G 1/8

options

hydraulic specifications

actuation pressure range	bar	10-30	>30 bar upon request
by media			
control		preferably 4/2-way control valve	
actuator ports	X/Y	G 1/4 via adapter	NPT 1/4 via adapter

options

